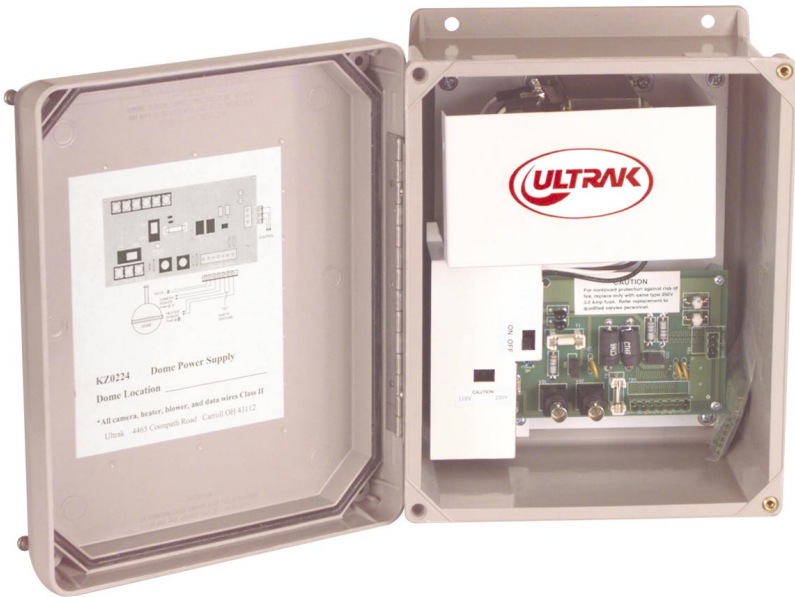


# KZ0224UW

---

**SURGE PROTECTED  
CCTV POWER SUPPLY  
24V AC, 5 AMP**



## **INSTALLATION MANUAL**



KZMI000549  
11/12/01

<b>ISSUE</b>	<b>DATE</b>	<b>REVISIONS</b>
<b>1</b>	<b>November 2001</b>	Initial release.

©2001 BY ULTRAK  
ALL RIGHTS RESERVED

ULTRAK CORPORATE OFFICE  
1301 WATERS RIDGE DRIVE  
LEWISVILLE, TX 75057  
(972) 353-6500

---

ALL RIGHTS RESERVED. NO PART OF THIS PUBLICATION MAY  
BE REPRODUCED BY ANY MEANS WITHOUT WRITTEN  
PERMISSION FROM ULTRAK.

THE INFORMATION IN THIS PUBLICATION IS BELIEVED TO BE  
ACCURATE IN ALL RESPECTS. HOWEVER, ULTRAK CANNOT  
ASSUME RESPONSIBILITY FOR ANY CONSEQUENCES  
RESULTING FROM THE USE THEREOF. THE INFORMATION  
CONTAINED HEREIN IS SUBJECT TO CHANGE WITHOUT  
NOTICE. REVISIONS OR NEW EDITIONS TO THIS PUBLICATION  
MAY BE ISSUED TO INCORPORATE SUCH CHANGES.

---

## WARNING

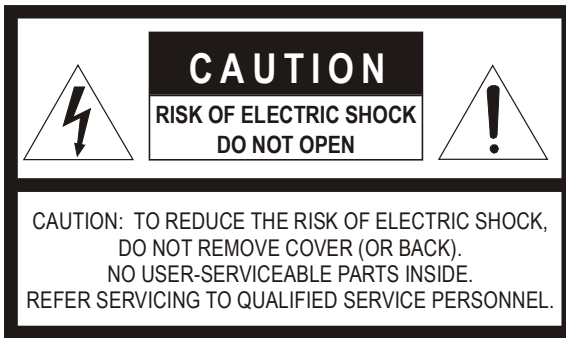
---

- TO REDUCE THE RISK OF FIRE OR ELECTRIC SHOCK, DO NOT EXPOSE THIS PRODUCT TO RAIN OR MOISTURE.
- DO NOT INSERT ANY METALLIC OBJECT THROUGH VENTILLATION GRILLS.

---

## CAUTION

---



---

## EXPLANATION OF GRAPHICAL SYMBOLS

---



The lightning flash with arrowhead symbol, within an equilateral triangle, is intended to alert the user to the presence of uninsulated "dangerous voltage" within the product's enclosure that may be of sufficient magnitude to constitute a risk of electric shock to persons.



The exclamation point within an equilateral triangle is intended to alert the user to the presence of important operating and maintenance (servicing) instruction in the literature accompanying the product.

---

## TABLE OF CONTENTS

---

<b>SECTION 1: INTRODUCTION .....</b>	<b>1</b>
<b>SECTION 2: INSTALLATION.....</b>	<b>3</b>
Power Output Connections.....	4
Surge Suppression Connections for Data Line .....	4
Surge protection for video .....	5
Power Connections .....	5
<b>SECTION 3: SPECIFICATIONS.....</b>	<b>7</b>
<b>ULTRAK OFFICES WORLDWIDE.....</b>	<b>8</b>

# SECTION 1: INTRODUCTION

---

## PRODUCT DESCRIPTION

---

The Ultrak KZ0224UW CCTV power supply is used to power a dome camera while providing surge suppression on power, video, and data lines.

---

## FEATURES

---

Each power supply includes the following features:

- **Camera output fused at 1.1 Amps.  
Heater/blower output fused at 4 Amps.  
Master fuse rated 6.3 Amps.**
- **Field-programmable to accept a 110 or 220V AC input.**
- **Housed in a NEMA-4 enclosure** for outdoor installation and **interconnect label** for easy installation and servicing.
- **ON/OFF switch.**
- **LED indicator** for AC.

**THIS PAGE INTENTIONALLY LEFT BLANK.**

## SECTION 2: INSTALLATION

### INSTALLATION

1. Remove the power supply from the carton and identify the following:
  - Power supply
  - Mounting Hardware

**NOTE:** A 120V or 220V ac power source is required but not provided with the unit.



**IMPORTANT:** Installation should be performed by a qualified person in conformance with all local codes.

2. Select a secure location to mount the KZ0224UW enclosure. Place the cabinet on the desired wall or other surface and mark the screw locations.
3. Place the cabinet on the desired wall and mark the screw locations. Set the cabinet aside and drill guide holes for the screws to be used.
4. Drill holes for the conduit entries in the box. A separate conduit entry is required for high voltage inputs and another conduit connection is required for 24V AC, video and data wiring. **DO NOT COMBINE HIGH VOLTAGE WIRING** with these low voltage lines in the same conduit.
5. Place the cabinet on the wall and secure with screws.

---

## INSTALLATION, CONTINUED

---

6. DO NOT connect AC to the unit at this time. Camera/dome connections should be made first. Use the plug-in terminal strips supplied with the unit. When wiring is complete, these can be plugged into the corresponding pins on the board. Be careful to connect the correct terminals. The side of the terminal block where the wires are connected should face the outside of the printed circuit board.

### **Power Output Connections**

7. Using 18 AWG stranded 2 conductor wire, connect one conductor to each of the 2 terminals marked CAMERA. Polarity is not important. Connect the other end of the conductors to the appropriate terminals at the camera.

Using 18 AWG stranded 2 conductor wire, connect one conductor to each of the 2 terminals marked HEATER. Connect the other end of the conductors to the appropriate terminals at the heater. This connection is not polarity sensitive, but it is recommended to connect camera and heater the same way to avoid potential polarity conflicts between the devices.

### **Surge Suppression Connections for Data Line**

8. The KZ0224UW provides surge suppression for the control input cable.

Connect the 2 terminals marked DATA IN to the DATA OUT terminals at the controller. Connect the terminal marked SHIELD to the shield of the cable.

Connect the 2 terminals marked DATA OUT to the DATA inputs at the dome.

---

## INSTALLATION, CONTINUED

---

### **Surge protection for video**

9. The KZ0224UW provides two BNC connectors for surge suppression on the video co-ax cable. Connect one connector to the camera's video connector and the other to the video input at the controller/ multiplexer or other device at the head end of the system.

### **Power Connections**

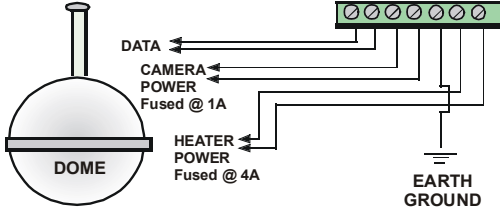
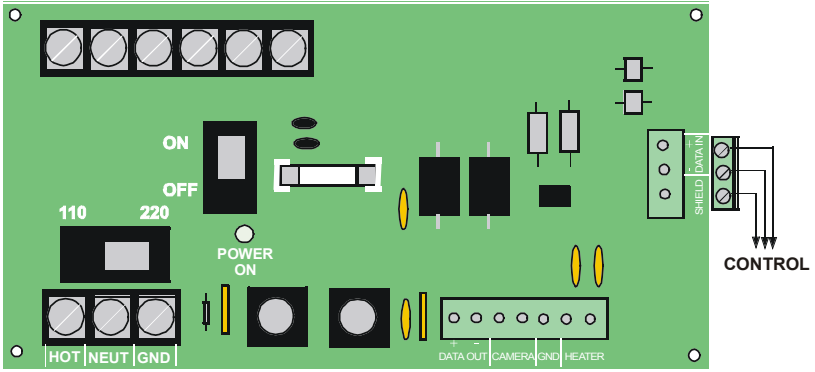
10. Make sure the power switch on the PCB is in the OFF (Down) position.

Select the input voltage required (110 or 220 V AC), using the other switch. 110V is the left position, 220V the right.

Bring AC power to the enclosure via conduit and a NEMA rated grommet. Connect corresponding AC power wires to the terminals marked HOT, NEUT (neutral) and GND (ground).

Double check all wiring and the voltage selection switch. Turn on the power switch on the board. The green LED should glow. Power is now available at the terminals.

# INSTALLATION, CONTINUED



**Be sure to use conduit and proper size grommets to run your wires.**

### SECTION 3: SPECIFICATIONS

<b>Voltage Input</b>	110V AC +/-10%, 60 Hz +/-1% OR 220V AC +/-10%, 50 Hz +/-10%
<b>Voltage Output</b>	24V AC, 60 Hz or 50 Hz, depending on input
<b>Current Output</b>	5 Amps total. Camera output fused at 1.1 Amps. Heater/Blower output fused at 4 Amps. Unit master fuse 6.3 Amps.
<b>Surge Suppression</b>	
<b>AC Input</b>	Clamping voltage = 340V RMS @ 6A
<b>Video</b>	24V RMS @ 1.1A
<b>Data</b>	24V RMS @ 1.1A
<b>Clamping Response</b>	<1nS
<b>Dimensions</b>	7W x 8H x 3.5D inches (177.8W x 203.2H x 88.9D mm)

# ULTRAK OFFICES WORLDWIDE

## US SALES OFFICES

### Ultrak Worldwide Support Center

Sales & Technical Support  
1301 Waters Ridge Drive  
Lewisville, TX 75057  
(800) 796-2288 • (972) 353-6400  
(972) 353-6500 (Corporate Office)  
FAX: (972)353-6670  
[info@ultrak.com](mailto:info@ultrak.com)

### ABM Data Systems – An Ultrak Co.

9020 Capital of Texas Highway North  
Suite 540 • Austin, TX 78759  
(512) 345-6900  
(800) 767-7067 (Sales)  
FAX: (512) 345-3252

## INTERNATIONAL OFFICES

### Ultrak Asia

221 Henderson Road  
#06-18 Henderson Building  
Singapore 159557  
+65 (2) 734 126  
FAX: +65 (2) 734 139

### Ultrak Asia Pacific

18-20 Ledger Road • Balcatta,  
Western Australia 6021 • Australia  
+61(8) 9240 3888  
FAX: +61(8) 9240 8040

### Ultrak Germany

Großenbaumer Weg 8 • D-40472  
Düsseldorf, Germany  
+ 49 (0) 211 415090  
FAX: + 49 (0) 211 424019  
[info@ultrak-germany.com](mailto:info@ultrak-germany.com)

### Ultrak Italy

Via Treviso • 2/4  
31020 San Vendemiano  
Treviso, Italy  
+ (39) 0438 36 51  
FAX: + (39) 0438 370471  
[info@ultrak-italy.com](mailto:info@ultrak-italy.com)

### Ultrak Poland

Ul. Niedzialkowskiego 24  
71-410 Szczecin, Poland  
+ 48 (0)91 423 20 61  
FAX: + 48 (0)91 423 20 63

### Ultrak Switzerland

Ch. Du Cloalet 4 • 1023 Crissier  
Switzerland  
+ 41 (0)21 671 04 01  
FAX: + 41 (0)21 671 04 02  
[info@ultrak-switzerland.com](mailto:info@ultrak-switzerland.com)

### Ultrak South Africa

Unit 6 • Galaxy Park  
17 Galaxy Avenue  
Linbro Park • 2065  
Johannesburg, South Africa  
+ 27 (0)11 608 2251  
FAX: + 27 (0)11 608 1929  
[info@ultrak-southafrica.com](mailto:info@ultrak-southafrica.com)

### Ultrak UK

Carnoustie House • The Links  
Kelvin Close • Birchwood  
Warrington, WA3 7PB, UK  
+ 44 (0)1925 844 200  
FAX: + 44 (0) 19 258 44 201  
[info@ultrak-uk.com](mailto:info@ultrak-uk.com)